

## **33 San Francisco Speed Camera Locations**

### **Don't Be Cited – Control Your Speed.**

**Citations will be issued beginning August 5, 2025 (Assembly Bill No. 645)**

1. 3rd Street from Key Avenue to Jamestown Avenue
2. 7th Street from Harrison to Folsom
3. 9th Street from Bryant to Harrison
4. 10th Street from Harrison to Folsom
5. 16th Street from Bryant to Potrero
6. Alemany from Farragut to Naglee
7. Bay Street from Octavia to Gough
8. Bayshore Boulevard from 101 off-ramp to Tunnel Avenue
9. Broadway from Powell to Stockton
10. Bryant from 2nd to 3rd Street
11. Cesar Chavez from Folsom to Harrison
12. Cesar Chavez from Indiana to Tennessee
13. Columbus Avenue from Lombard to Greenwich
14. Embarcadero from Green to Battery
15. Franklin Street from Union to Green
16. Fulton from Arguello to 2nd Avenue
17. Fulton from 42nd Avenue to 43rd Avenue
18. Geary from 7th Avenue to 8th Avenue
19. Geary from Webster to Buchanan
20. Geneva from Prague to Brookdale
21. Guerrero from 19th Street to 20th Street
22. Harrison from 4th Street to 5th Street
23. King Street (NB only) from 4th Street to 5th Street
24. Lincoln from 27th Avenue to 28th Avenue
25. Market Street from Danvers to Douglass
26. Mission Street from 8th Street to 9th Street
27. Mission Street from Ottawa to Allison
28. Monterey Boulevard from Edna to Congo
29. Ocean Avenue from Friday Kahlo to Howth
30. San Jose Avenue from 29th Street to 30th Street
31. San Jose Avenue from Santa Ynez to Ocean Avenue
32. Sloat Boulevard from 41st Avenue to Skyline
33. Turk from Van Ness to Polk

### **What speed will trigger a notification of violation?**

The state law specifies this; any speeding 11 miles per hour or over the posted speed limit would trigger a violation. Notifications of violations will be mailed to the registered owner of the speeding vehicle within two weeks of the violation.

# Speed Safety Cameras



SFMTA



## Making Our Neighborhoods Safer

Speed is ***the*** leading cause of death and serious injury on San Francisco's streets. Speed safety cameras are another important tool that will help make streets safer for everyone.

The cameras, which are located at 33 locations across the city, have been issuing warnings to drivers going 11 mph or more over the speed limit.

Drivers will receive a violation notice and a penalty of \$50 or more for speeding.

Speed safety cameras work by capturing the license plate numbers of vehicles going over the posted speed limit. SFMTA will issue a violation notice to the vehicle owner for speeding, which will be delivered by mail.

### Why now?

In 2023, the California State Legislature authorized a speed safety camera pilot program for six designated cities, including San Francisco, Oakland and San José. We're excited to bring this new technology to SF.

### Where are speed safety cameras installed?

Speed safety cameras are dispersed across San Francisco in an equitable fashion—reflecting the diverse socio-economic makeup of the city. The program is intended to benefit all communities and not single out any particular neighborhood.

State law also mandates that speed safety cameras may only be installed on City-owned streets. After reviewing about 80 possible locations, the City identified 33 sites for the speed safety camera pilot project.



[SFMTA.com/SpeedCameras](https://www.sfmta.com/SpeedCameras)

## What Does This Mean for Me?

### At what speed will I get a violation notice and who sets the limit?

The speed thresholds and penalties are established by the state law. Drivers going at least 11mph over the posted speed limit will receive a notice of violation. The penalties are proportional to the speed the driver is going.

### How much is the violation if I get caught?

Drivers caught driving 11mph to 15mph over the posted speed limit will receive a \$50 penalty. Penalties can reach up to \$500 if caught driving over 100mph.

### What data is collected and who is it shared with?

Only the rear license plate of a speeding vehicle will be captured as part of the program. The data will be stored for SFMTA use only and will not be shared with any other agency, unless ordered by the court to do so. The data will be stored on SFMTA servers for up to 120 days.

### Will the automated speed enforcement system be on all the time?

Once the program begins, the automated speed enforcement systems will be enforcing the speed limit at 33 locations 24 hours a day, seven days a week.

### What are some alternatives to paying the violation notice?

Drivers who receive a violation notice have the option to participate in community service options in lieu of paying for the violation. There are also options for payment plans and discounts for low-income households.

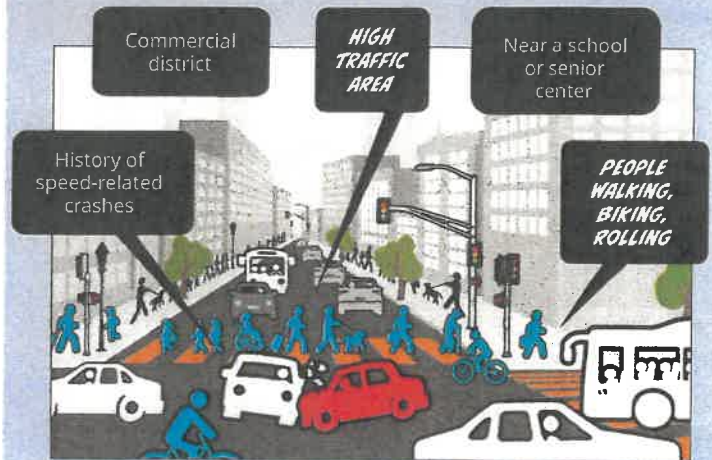
### Someone stole my car and I received a violation notice. What happens now?

People who receive a violation notice because their car was stolen are eligible to submit an affidavit of non liability.

## Speed Safety Camera Placement

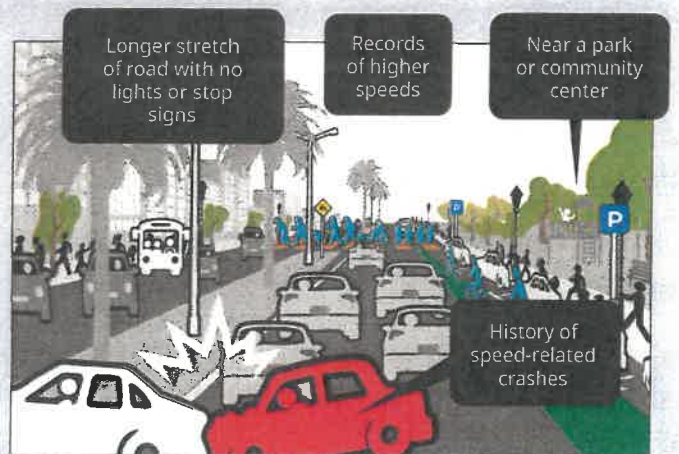
Cameras can make our streets safer by slowing driver speeds. Here are some examples of where SFMTA may place cameras.

### Protecting Neighborhoods



In dense neighborhoods, high intensity car traffic led to a history of crashes. Drivers may speed up to make it through a light or make a turn. A lot of car traffic, combined with people walking, biking and rolling, has led to a history of crashes.

### Slowing Major Streets



Cameras can help make sidewalks and crossings safer for people walking, rolling, and biking to the shops, businesses, tourist destinations and homes, especially when people cross without a stop light.